



GalaLED

Revolution in portable LED work lighting
For shipbuilding, ship repair, conversion, retrofit, maintenance



The GalaLED work lighting system is the GO – TO system for any newbuilding, repair, conversion, retrofit or any maintenance project. The system ensures maximum productivity and worker safety. Due to its light and robust construction and low operating voltage, the lamps can be used during steelwork, welding, sand-blasting, high-pressure washing and anticorrosion protection.

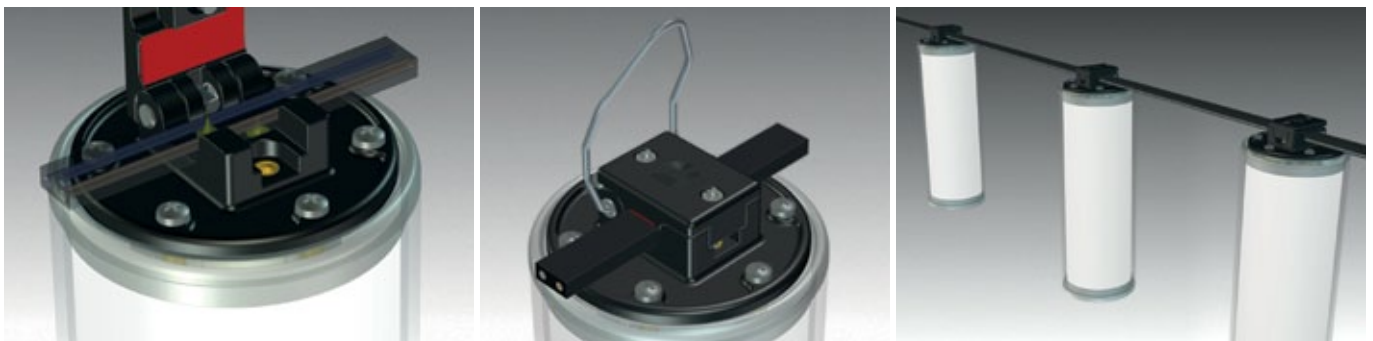
All GalaLED lighting has an outstanding luminous flux ranging from 1300 lm to 2200lm and therefore suitable for dark, confined, dump areas where high reliability illumination is necessary.

GalaLED lamps have a very high degree of ingress protection IP67, as well as the highest level of mechanical/impact protection IK10.

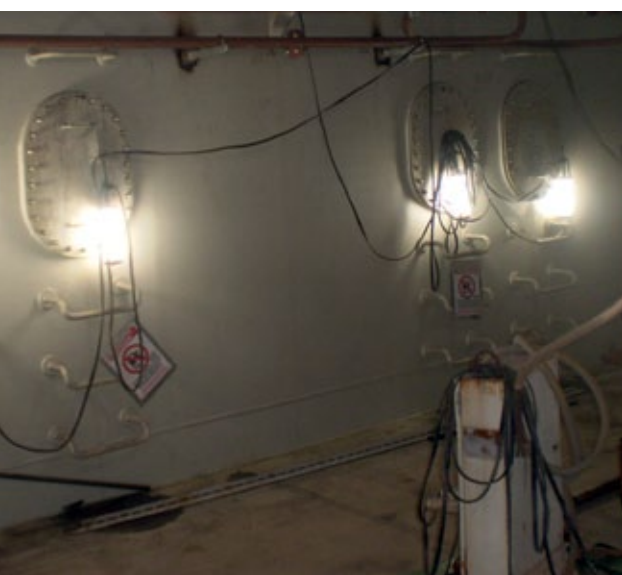
The GalaLED system is available in different voltage levels: 24VAC/DC, 42VAC/DC, 110VAC/DC.

The GalaLED system can be connected to three types of power supply cable - 2 x 1,5mm², 2 x 2,5mm² and 2 x 6mm² size of cable. This cable type (flat, rubber cable H05RNH2-F) is specifically intended for heavy industry conditions. It is strong, flexible and water resistant.

GalaLED system allows fast adding and removing of additional lights to the cable if necessary.



GalaLED	ST01	BA02	ST11	ST21
Electrical Characteristics				
Nominal Voltage	42VAC	42VAC	110VAC	24VDC
Operating Voltage	38 - 48VAC	20 - 48VAC 20 - 60VDC	80-120VAC 90-130VDC	20 - 30VDC
Total Power	~17W	~12W	~17W	~17W
Power Factor	> 0,7 at 42VAC	> 0,99 at 42VAC	-	-
Total Harmonic Distortion	~22 %	~15%	-	-
Operating Temperature	-40°C to +50°C			
Light Technology Characteristics				
Initial Total Lumens	~1900lm	~1300lm	~2000lm	~2000lm
Luminary Efficacy	~110lm/W	~110lm/W	~120lm/W	~120lm/W
CCT (Correlated Colour Temperature)	4500K to 5500K			
CRI (Colour Rendering Index)	80 - 85			
Protection, Construction, Dimensions				
IP Rating	IP67			
Protection	IK10, OVP, OTP			
Luminary Inner Protective Cover	PMMA 2,5mm			
Removable Protective Cover	Polycarbonate 2,5 - 3mm			
Housing	PMMA, PA6, PC, ABS			
Fixture Weight	0,65kg	0,53kg	0,65kg	0,65kg
Dimensions	D90 x H280mm	D90 x H205mm	D90 x H280mm	D90 x H280mm



DATA LINK d.o.o. Bjelovar
Blajburških žrtava 16, 43000 Bjelovar – Croatia

Phone: +385 (0)43 211 111; Fax: +385 (0)43 211 100
E-mail: info@datal.com

www.datal.com

The content of the broadcast material are the sole responsibility of company DATA LINK.