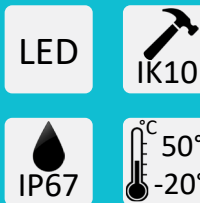
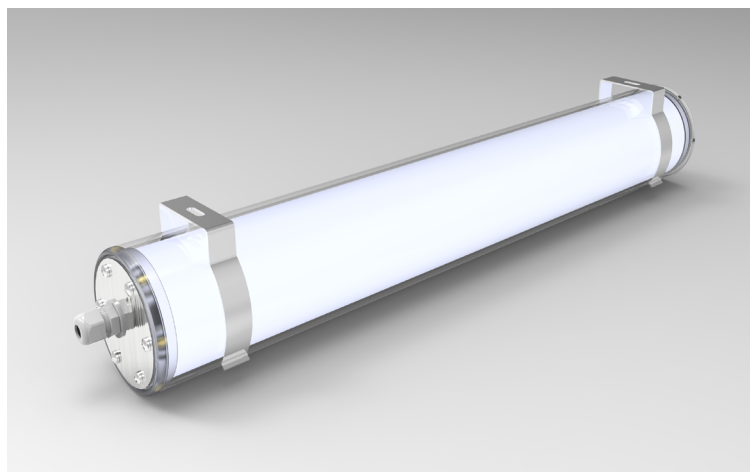


# TEHNIICAL SPECIFICATIONS

## SEAL



- Standard model - high quality non corrosive linear LED lamp

- Emergency model - standard model with an emergency mode

- Mechanical protection grade IP67, IK10

- Excellent thermal management

- Different mounting options

- Water resistant

- No glare effect

- High lumen output 3 000 lm to 6 500 lm

- Maintenance free

SEAL	650-230	EM 650-230	EM 650-110	1250-230	EM 1250-230
Item No.	1001831	1001833	1002153	1002201	1002204

Electrical Characteristics					
Nominal Voltage	110VAC-230VAC	230VAC	110VAC	110VAC-230VAC	230VAC
Operating Voltage	90 - 305VAC 127 - 431VDC	230±15%VAC	110±15%VAC	90 - 305VAC 127 - 431VDC	230±15%VAC
Total Power	~25W			~55W	
Power Factor	>0.95 at 230VAC		>0.97 at 110VAC	>0.95 at 230VAC	
Operating Temperature	-20°C to +50°C				

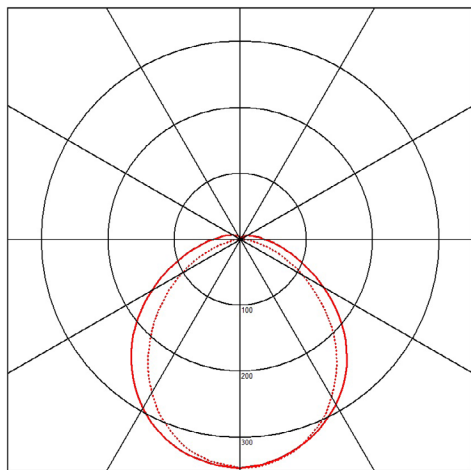
Light Technology Characteristics				
Initial Total Lumens	3000lm	min 450lm		6500lm min 450lm
Emergency Light	2.5h autonomy, 8h charging time, NiCad Battery			
Luminary Efficacy	~120lm/W			
CCT	~5000K			
CRI	80 - 85			
Illumination Angle	120°			

Protection & Construction				
IP and IK Protection	IP67, IK10			
Protections	OVP, OTP			
Luminary Inner Protective Cover	PMMA 2.5mm			
Protective Cover	Polycarbonate 2.5mm			
Housing	PMMA, PA6, PC, ABS			
Gasket	Silicone gasket			
Cable entry	6 - 13mm			
Fixture Weight	2.1kg	2.5kg	3.5kg	3.9kg
Lifespan(on 25°C)	50 000 hours			



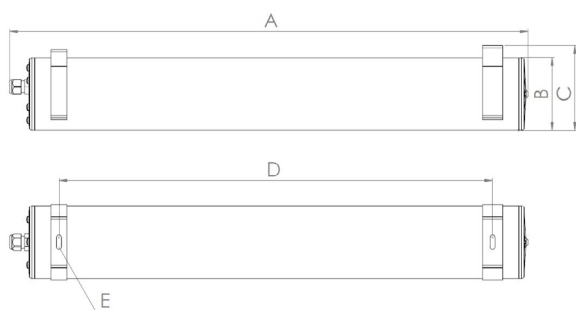
# POLAR CURVE

SEAL models



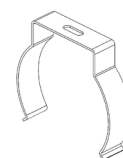
SEAL models	Beam Angle
650-230-25	120°
1250-230-55	120°
650-110-25 EM	120°
650-230-25 EM	120°
1250-230-55 EM	120°

## DIMENSIONS, CONNECTION

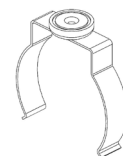


Seal	650/650 EM/110 EM	1250/1250 EM
A	660mm	1260mm
B	ø90mm	ø90mm
C	105mm	105mm
D	400-550mm	1000-1150mm
E	2 x ø6mm	2 x ø6mm

## ACCESSORIES



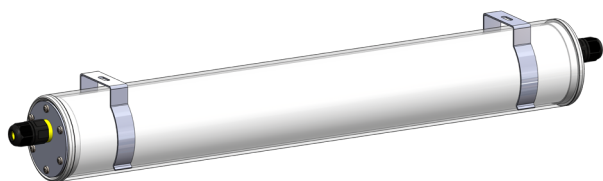
Mounting Bracket with nut and screw 1002032



Magnetic Mounting Bracket 1002033

## ADDITIONAL OPTIONS

One gland on both sides



Two glands on one side

