



Ex GalaLED

Portable, safety LED lighting with high level of protection intended for use in hazardous areas with explosive gas and dust atmospheres

TYPE OF PROTECTION	Ex d	Ex tb	GAS GROUPS		DUST GROUPS
			IIB	IIC	IIIC
EQUIPMENT PROTECTION LEVEL	ZONE	1	2	21	22
	LEVEL	Gb	Gc	Db	Dc

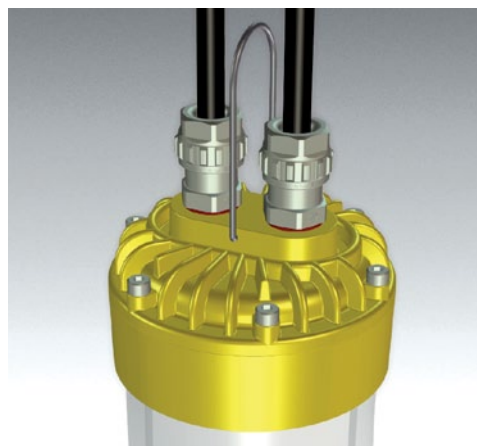
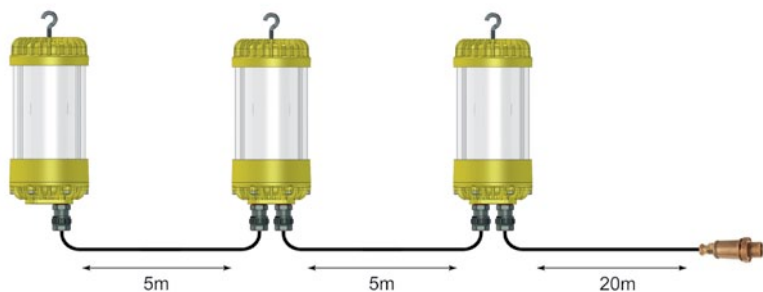
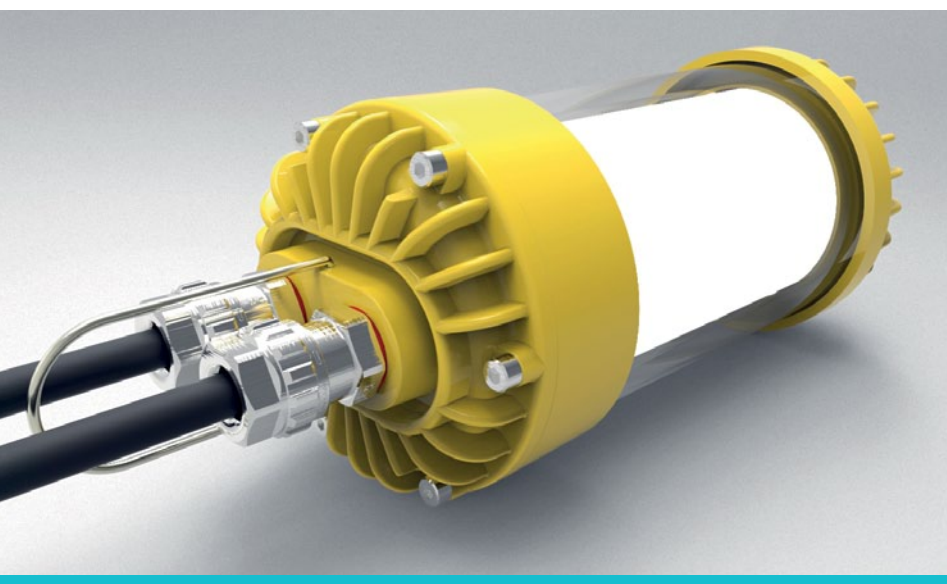
The lamp is designed for application in shipbuilding and offshore industries, for both indoor and outdoor spaces, can be used as portable lighting and as general fixed in lighting.

There are two voltages available. 230VAC and 42VAC which is in compliance with the highest safety standards (CENELEC norm HD63751).

Ex GalaLED weighs only 2.3kg, has high lumen output and high level of mechanical protection IP67 and IK08.

Ex GalaLED is a state of the art lamp product with many outstanding features. It is not only "armour" with a retrofitted LED light source, but a specially designed LED light source with an robust and reliable external enclosure that is also a heat sink for efficient LED cooling.

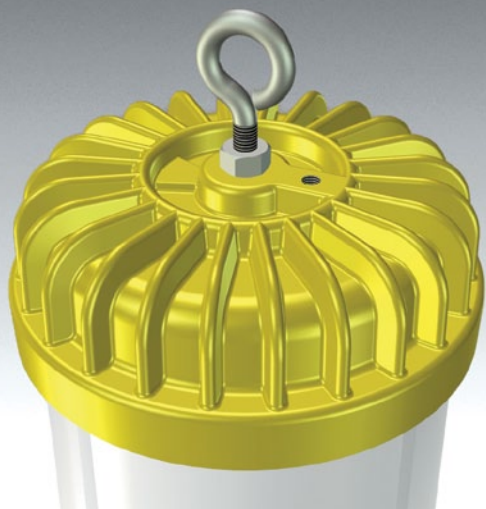
During development of Ex GalaLED the main priority was to make a low weight, compact lamp that is easy to manipulate with.



Ex GalaLED

- Designed for application in hazardous, indoor and outdoor areas
- Available in 230VAC model and 42VAC model
- Applicable in Hazardous zones: 1, 2, 21, 22





Ingress Protection
GLASS

IP67

IK08

Light source

**LED Module
5000K, 360°**

Main advantages of Ex GalaLED

- Significant cost reductions
- Energy savings
- Increase in lighting operation reliability
- Increase in worker productivity

Ex GalaLED FEATURES

- Ex GalaLED enables outstanding thermal management since the LED engine is attached directly to the top and bottom cover, acting as a heat sink
- Circular LED light source of 360° or 180° depending on the model
- High light intensity with no glare effect
- Low weight of 2,3kg

Ex GalaLED can be used both as fixed and portable lightening.

Ex GalaLED **42V/25W** **230V/30W**

Electrical Characteristics

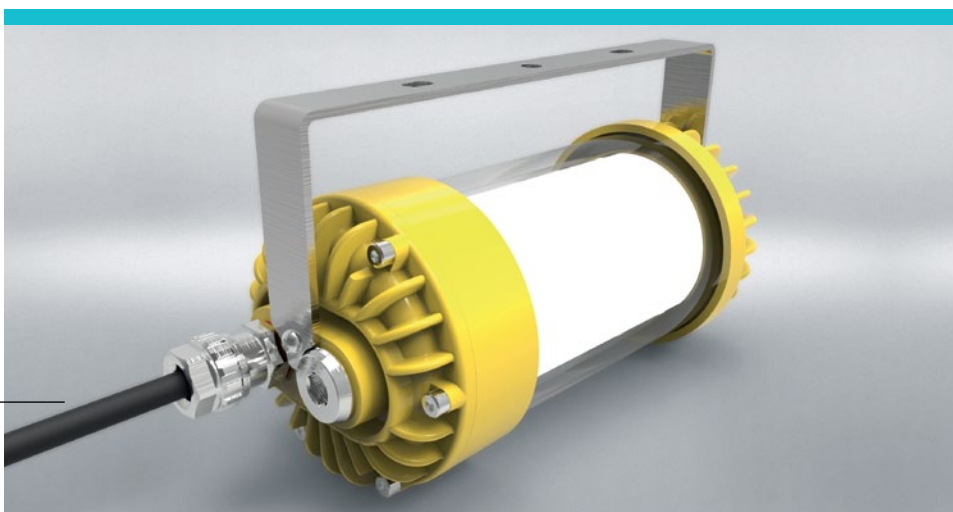
Nominal Voltage	42VAC	230VAC
Operating Voltage	38 - 48VAC; 38 - 60VDC	210 - 250VAC
Total Power	~25W	~30W
Power Factor	≥ 0,98 at 42VAC	> 0,98 at 230VAC
Total Harmonic Distortion	~8 %	~13%
Operating Temperature	-40°C to +50°C	

Light Characteristics

Lumen output	~2500lm	~3500lm
Luminary Efficacy	~100lm/W	~115lm/W
CCT (Correlated Colour Temperature)	4500K to 5500K	
CRI (Colour Rendering Index)	80 - 85	
Estimated service life	60.000 working hours temp. 25°C	

Protection, Construction, Dimensions

IP Rating	IP67
Protection	IK08, OVP, OTP
Diffuser	PMMA 2,5mm
Housing	Aluminum alloy powder painted with tempered borosilicate glass tube
Fixture Weight	2,3kg
Dimensions	D110 x H268mm
Cable entry	2xM20 glands or M20 gland and M20 plug
Connection cable	3x1.5mm ² or 3x2.5mm ²
Connection terminal	L1,N,PE max 3x2.5mm ² External PE terminal M5
Certificate	EXA 16 ATEX 0069X
Explosion protection	II 2G Ex db IIC T6 Gb; II 2D Ex tb IIIC T85°C Db



DATA LINK d.o.o. Bjelovar
Blajburških žrtava 16, 43000 Bjelovar – Croatia

Phone: +385 (0)43 211 111; Fax: +385 (0)43 211 100
E-mail: info@datal.com

The content of the broadcast material are the sole responsibility of company DATA LINK.

Zagreb Office
Phone: +385 (0)1 7792 185

www.datal.com