



Ex GalaLED

Portable, safety LED lighting with high level of protection intended for use in areas with an explosive gas and dust atmosphere.

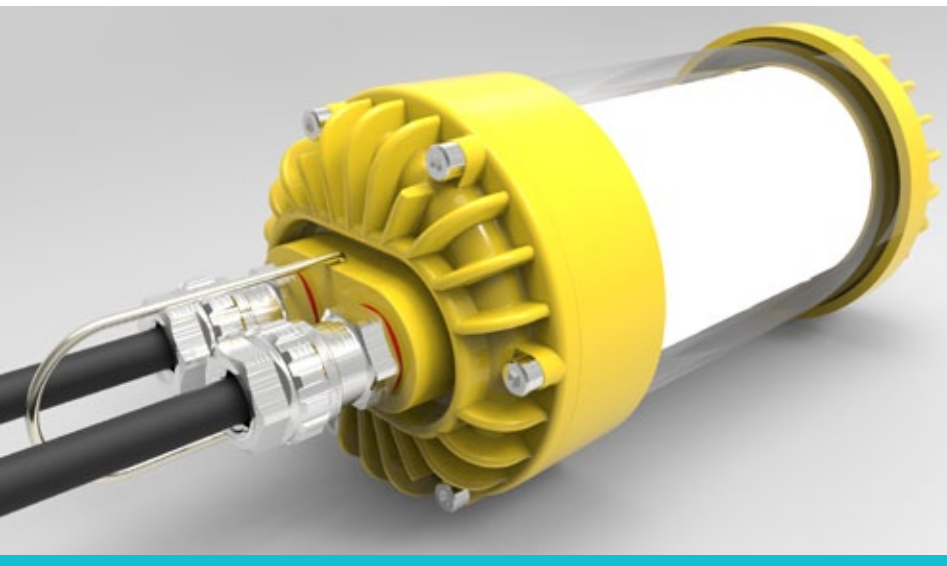
TYPE OF PROTECTION	Ex d	Ex tb	GAS GROUPS		DUST GROUPS
			IIB	IIC	IIIC
EQUIPMENT PROTECTION LEVEL	ZONE	1	2	21	22
	LEVEL	Gb	Gc	Db	Dc

The lamp is designed for use in shipbuilding and offshore industry, both indoor and outdoor spaces, can be used as portable lighting as well as mounted as general lighting.

It operates on a safety voltage of 42 VAC which is in compliance with the highest safety standards (CENELEC norm HD63751).

Ex GalaLED lamp weighs only 2.1kg, has luminous flux up to 4000 lumen, and has a high level of protection.

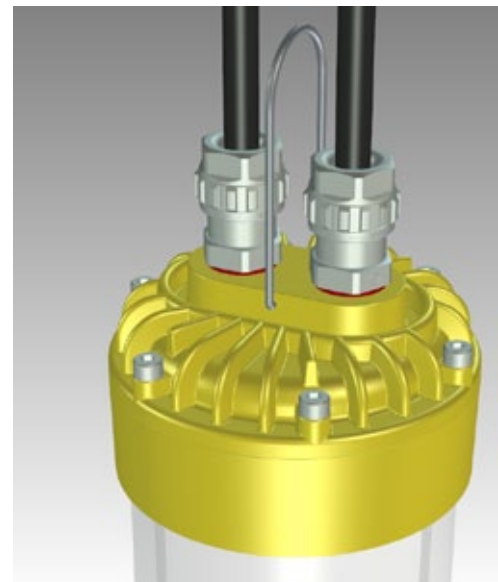
The Ex GalaLED Lamp is a state of the art product with many outstanding features. This is not only "armour" with a retrofitted LED light source, but a specially designed LED light source with an extremely robust and reliable enclosure that is also a heat sink for very efficient LED cooling.



During development of Ex GalaLED our priority was to make the lamp compact, which is why we created a low weight lamp which is easy to handle and manipulate with. The LED driver is specially designed to be very efficient and to work on a safe low voltage source of 42 VAC.

Ex GalaLED lamp

- Designed for application in indoor and outdoor facilities and industrial areas
- Used as temporary safety lighting during shipbuilding and ship repair
- Applicable in Hazardous zones: 1, 2, 21, 22





Ingress Protection
GLASS

IP67

IK8

Light source

**LED Module
4500K, 360°**

Main advantages of Ex GalaLED

- Significant cost reductions
- Energy savings
- Increase in lighting operation reliability
- Increase in worker productivity

Ex GalaLED FEATURES

- Ex GalaLED allows excellent thermal management because the LED engine is directly attached to the top and bottom cover acting as an efficient heat sink
- The LED light source has a circular characteristic of 360°
- Ex GalaLED has high light intensity with no glare effect
- Low weight of 2,1kg

TECHNICAL SPECIFICATIONS Ex GalaLED

Electrical Characteristics

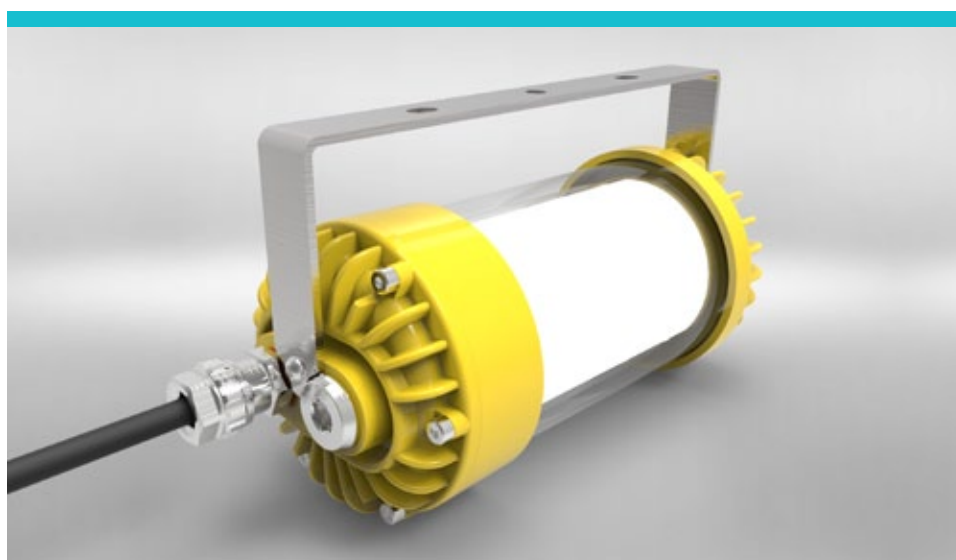
Operating Voltage	38-48VAC / 50-60Hz
Total System Power Consumption	~ 35W
Power Factor	≥ 0,98 at 42VAC
Total Harmonic Distortion	lthd < 8%
Operating Temperature	-20°C to +50°C
IP Rating	IP67

Light Characteristics

Lumen output	at 25°C > 3500lm
Luminary Efficacy	≥100lm/W at 5000K
CCT (Correlated Colour Temperature)	4500K to 5500K
CRI (Colour Rendering Index)	≥ 80
Estimated service life	60.000 working hours Temp. 25°C

Protection, Construction, Dimensions

Protection	Over Voltage Protection, Over Current Protection, Over Temperature Protection, IP67, IK8
Enclosure (Fixture body)	Manufactured from aluminum alloy AlSi10Mg
Housing	DURATAN®, thermally prestressed borosilicate glass tubing, wall thickness 7mm;
Fixture Weight	2,1kg
Dimensions	Ø110mm, H268mm (including Gland)



DATA LINK d.o.o. Bjelovar
Blajburških žrtava 16, 43000 Bjelovar – Croatia

Phone: +385 (0)43 211 111; Fax: +385 (0)43 211 100
E-mail: info@datal.com

Zagreb Office - Emporion center
Heinzlova ulica 62/2, 10000 Zagreb – Croatia

Phone: +385 (0)1 6396 307

www.datal.com